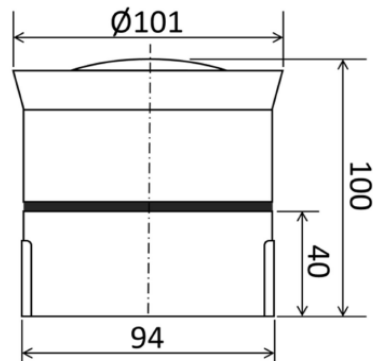


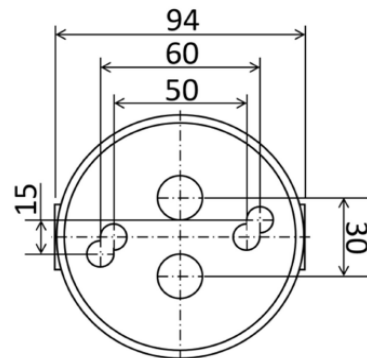
Drawing of Component

Unit: mm

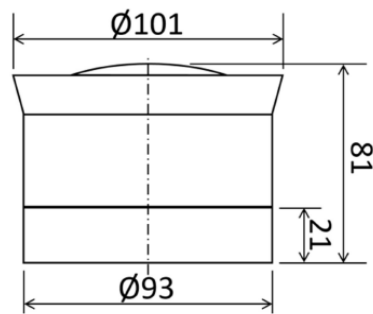


Deep Base (Standard)

Use IP65 cable gland M20 x 1.5 with a thread length of 9 to 15 mm or rubber gasket for the side cable entry. Note: The M20 counter nut can only be mounted with SW24. Use IP65 cable gland M12 x 1.5 with a thread length of ≥ 10 mm at the bottom cable entry with the B/SE ASSEMBLING RING.

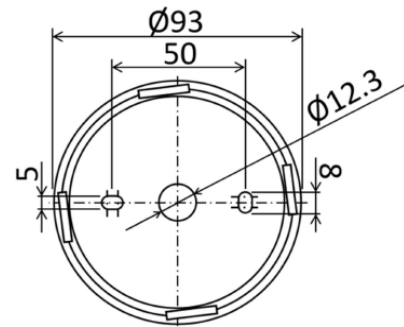


Bottom view of Deep Base



Shallow Base

Cable entry is only possible through to the base plate.



Bottom view of Shallow Base

Ceiling installation with B/SE ASSEMBLING RING (optional) only with Deep Base

Drilling for Base: Ø95 mm

Drilling for Holding screws: 2x Ø12 mm

Use a suitable M12 x 1.5 IP65 cable conduct or rubber gasket at the bottom of the Base

